



U.S. Fish & Wildlife Service

Natural Resource Program Center

National Wildlife Refuge System

Collaboration Efforts in the FWS Inventory & Monitoring Initiative

Peter Dratch, PhD

Strategic Collaborative Science Program Summit II

July 2013

Natural Resource Program Center

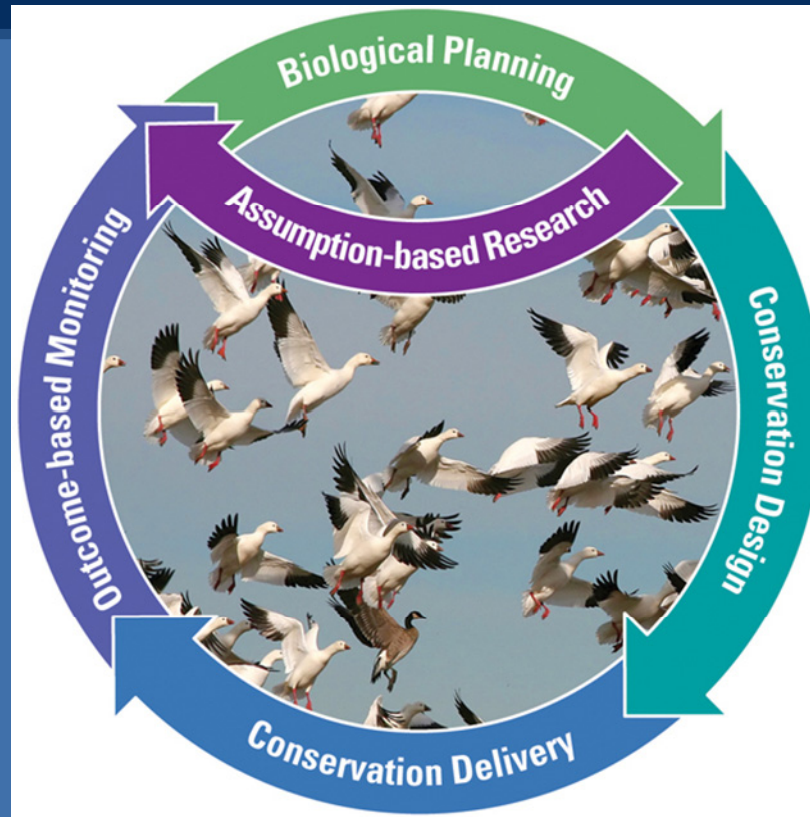




U.S. Fish & Wildlife Service

Natural Resource Program Center

National Wildlife Refuge System



Natural Resource Program
Natural Resource Program Center





U.S. Fish & Wildlife Service

National Wildlife Refuge System I&M

A nationally directed effort that informs planning and conservation science at refuge, regional and landscape scales which supports conservation management.

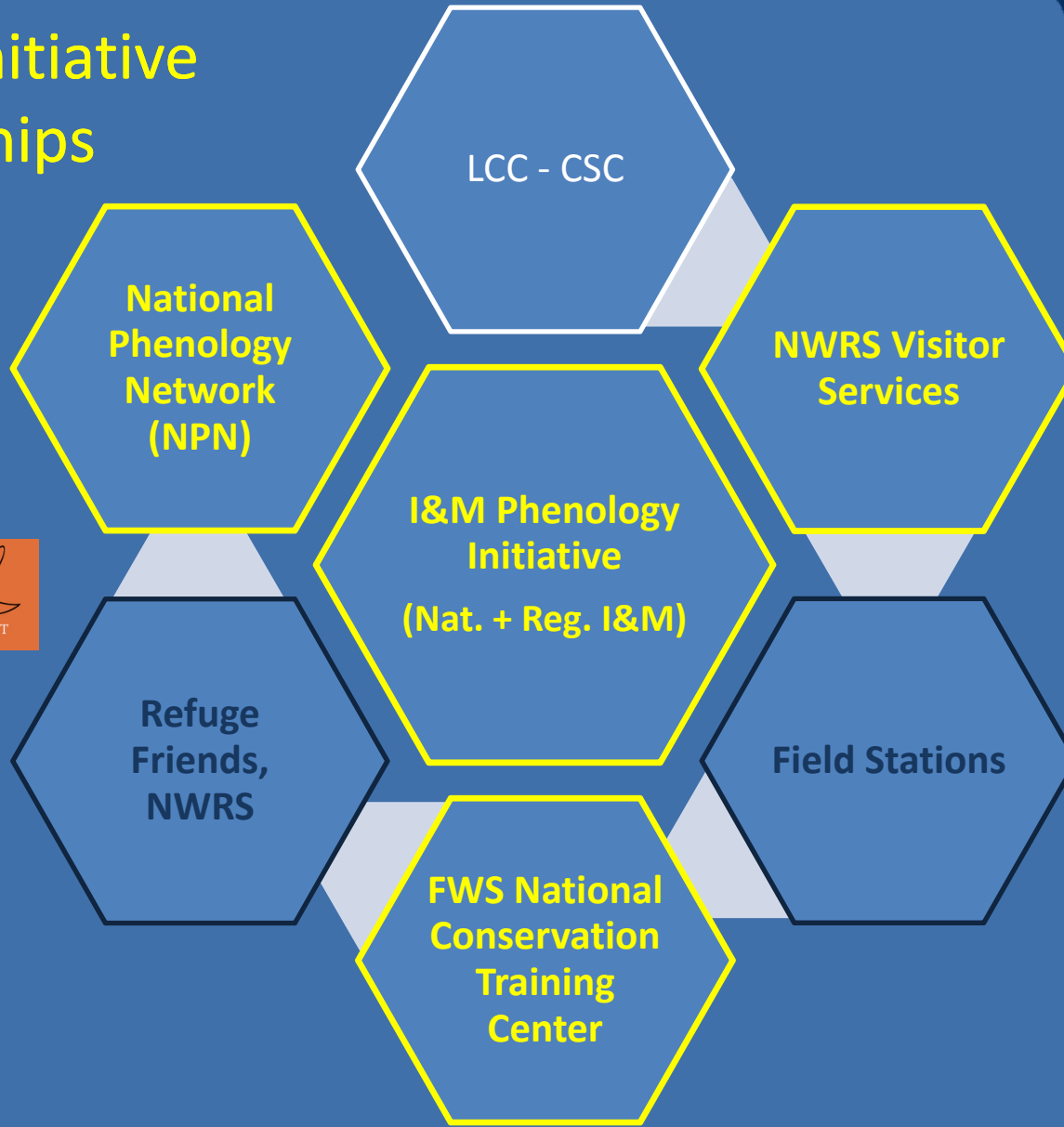
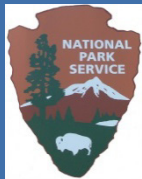
We monitor the biological resources, ecological processes, and components of the physical environment to support the legislative mission of the Refuge System.

Natural Resource Program Center
Natural Resource Program Center





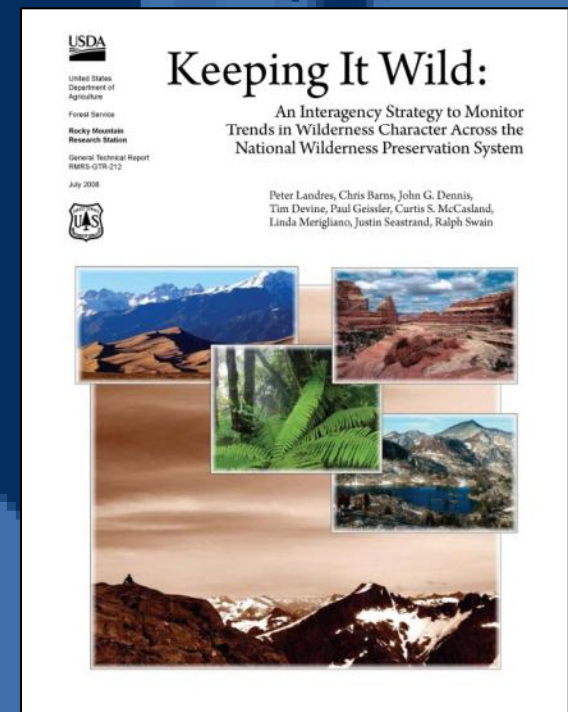
Phenology Initiative Partnerships





Wilderness Character Monitoring

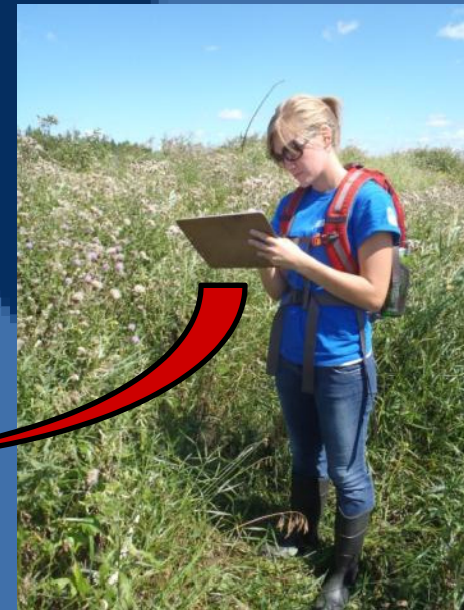
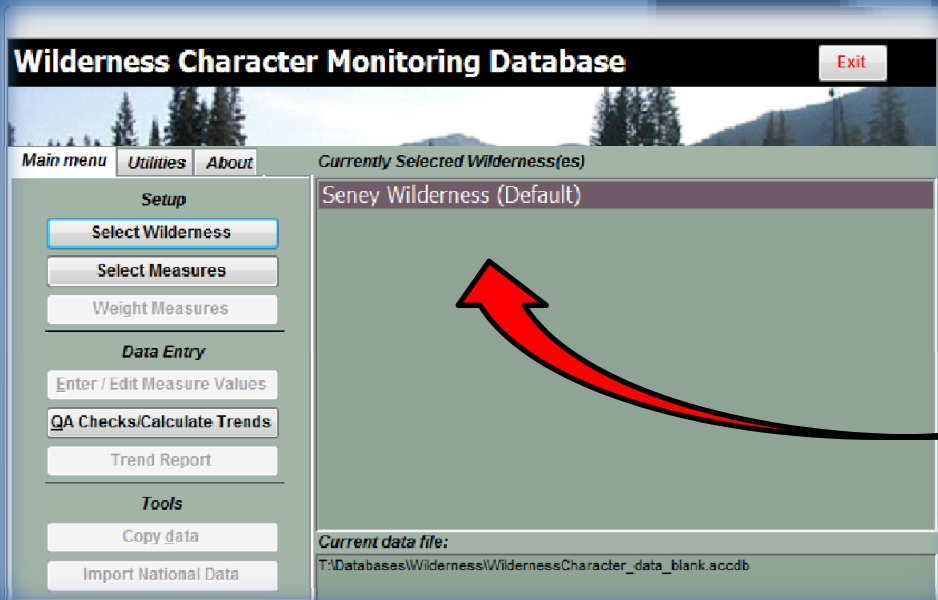
- In 2010, FWS chartered a Wilderness Character Monitoring Committee
- The NWRS has 21 million acres, 18% of all designated wilderness
- Agencies use consistent definitions and monitoring strategy to collect data on the wilderness areas
- Provides the ability to evaluate the impacts of proposed actions on wilderness





Wilderness Character Monitoring

- Data collected on refuges will be collated in a national wilderness character database
- Database developed as an FWS-NPS partnership



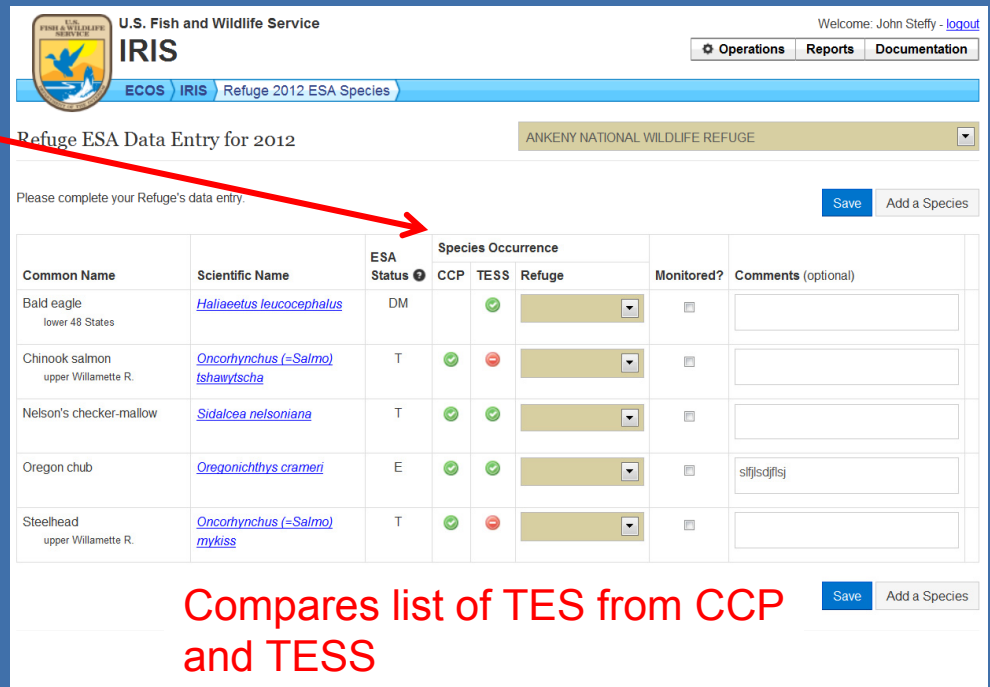
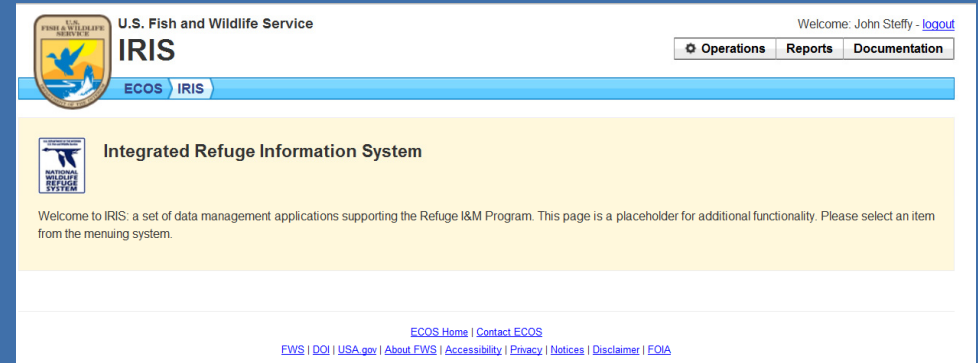


ECOS Refuge ESA: Updating T&E Status

1. A tool to collect ESA species occurrence data for the entire Refuge System.
2. Used to update and inform current Refuge ESA species lists within ECOS TESS (Threatened and Endangered Species System).
3. Updated status data will be available to ES via ECOS.

John_Steffy@fws.gov for more info

Natural Resource Program Center



Compares list of TES from CCP and TESS

Natural Resource Program Center





FWS & NPS Collaboration



.NET
C#
MS SQL



IRMA Portal

ECOS

Data Store

NPSpecies

Inventory Tracking

ServCat

WRIA

PRIMR





FWS & NPS Collaboration

U.S. Fish and Wildlife Service
ServCat
Fish & Wildlife Service Catalog

Home Search Create Manage News About Help Contact Us

Portal
Welcome to ServCat »

Search ServCat

Search Text: Enter search term here... Search Tips **New!** Advanced Search

Filter by Organizations

Clear Search Search

Quick Links

Featured Content Frequently requested information in ServCat.	Planning and Review of I&M Activities on Refuges (PRIMR) Document and catalog legacy, on-going, and new surveys on field stations.
Help Manual Comprehensive help manual for ServCat.	Fire Management Information System (FMIS) The fire information management system for the USFWS.
Help Videos Topic-specific ServCat help videos.	Pesticide Use Proposal System (PUPS) The integrated pest management and pesticide use proposal database for the USFWS.
Taxonomy Find species' common and scientific names, and their associated taxonomic classification.	Corporate Master Table The official source of USFWS organization codes and related information.
Organizations Perform quick searches of FWS organizations using Region and Organization Type filters.	Natural Resource Program Center Web Site
REST Services Fetch data directly from the ServCat, Taxonomy or the Organizations Services for use in applications or websites.	USFWS Geospatial Services Web Site
	FWS Lands Mapper

IRMA Portal
Integrated Resource Management Applications

National Park Service
U.S. Department of the Interior
Natural Resource Stewardship and Science

Home Search Topics News About Help Contact Us

Portal
Welcome to IRMA »

Search the NPS Data Store

Enter search term here... Search Tips **New!** Advanced Search

Clear Search Search

Park Visitor Use Statistics
Data and comprehensive graphs, reports, and statistics on historic, current, and forecasted visitor use of national parks.

PEPC (Planning, Environment & Public Comment)
Information and documents related to all active NPS projects, and tools for submitting comments.

RPRS (Research Permit and Reporting System)
Allows researchers to apply for and report on scientific research conducted in parks.

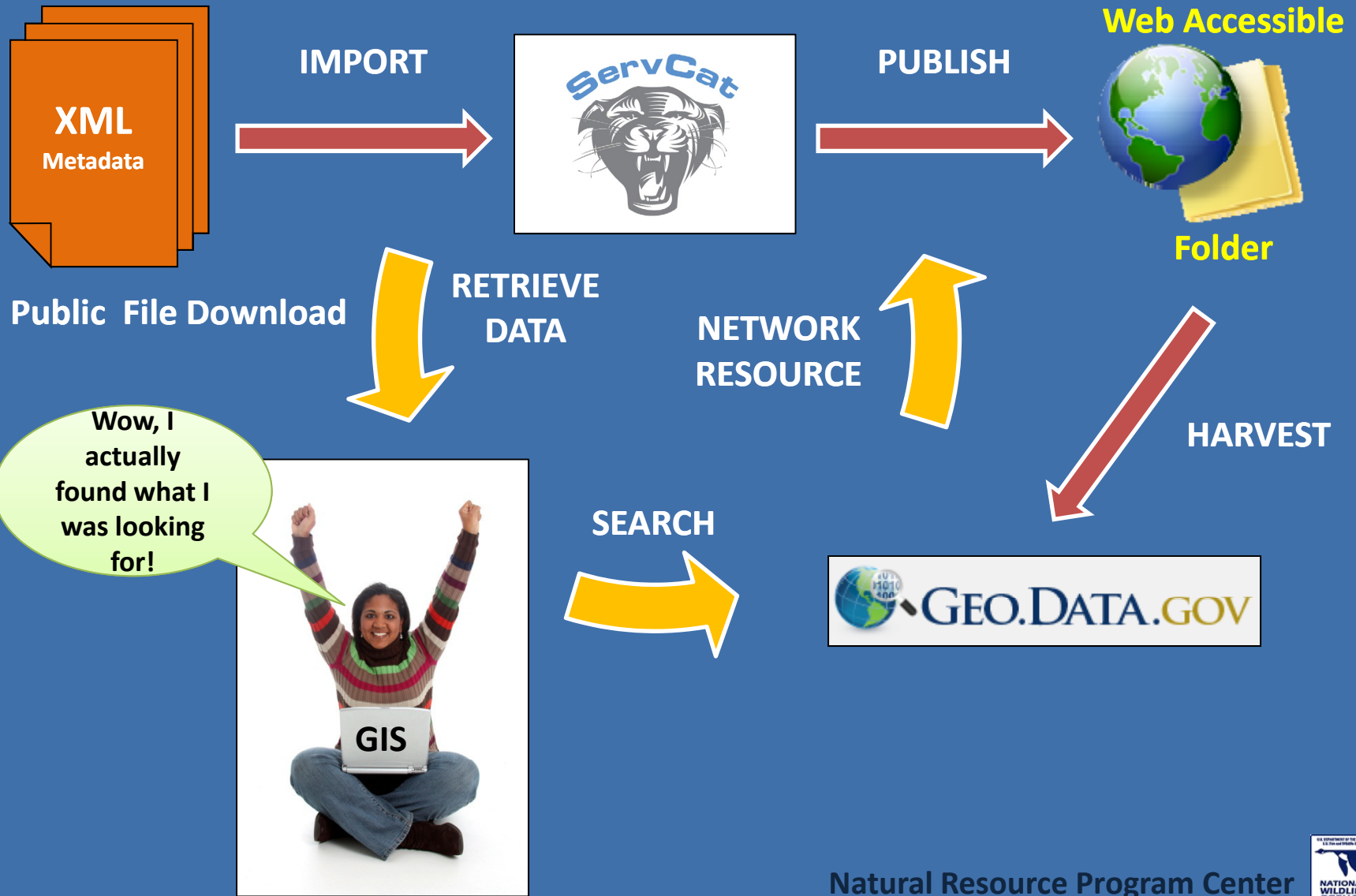
Survey Request Tracking
Submit a request to conduct a public social science survey in a park and track the approval process.

Map Services
Store, NPSpecies, Taxonomy, Units, or Map sites or websites.



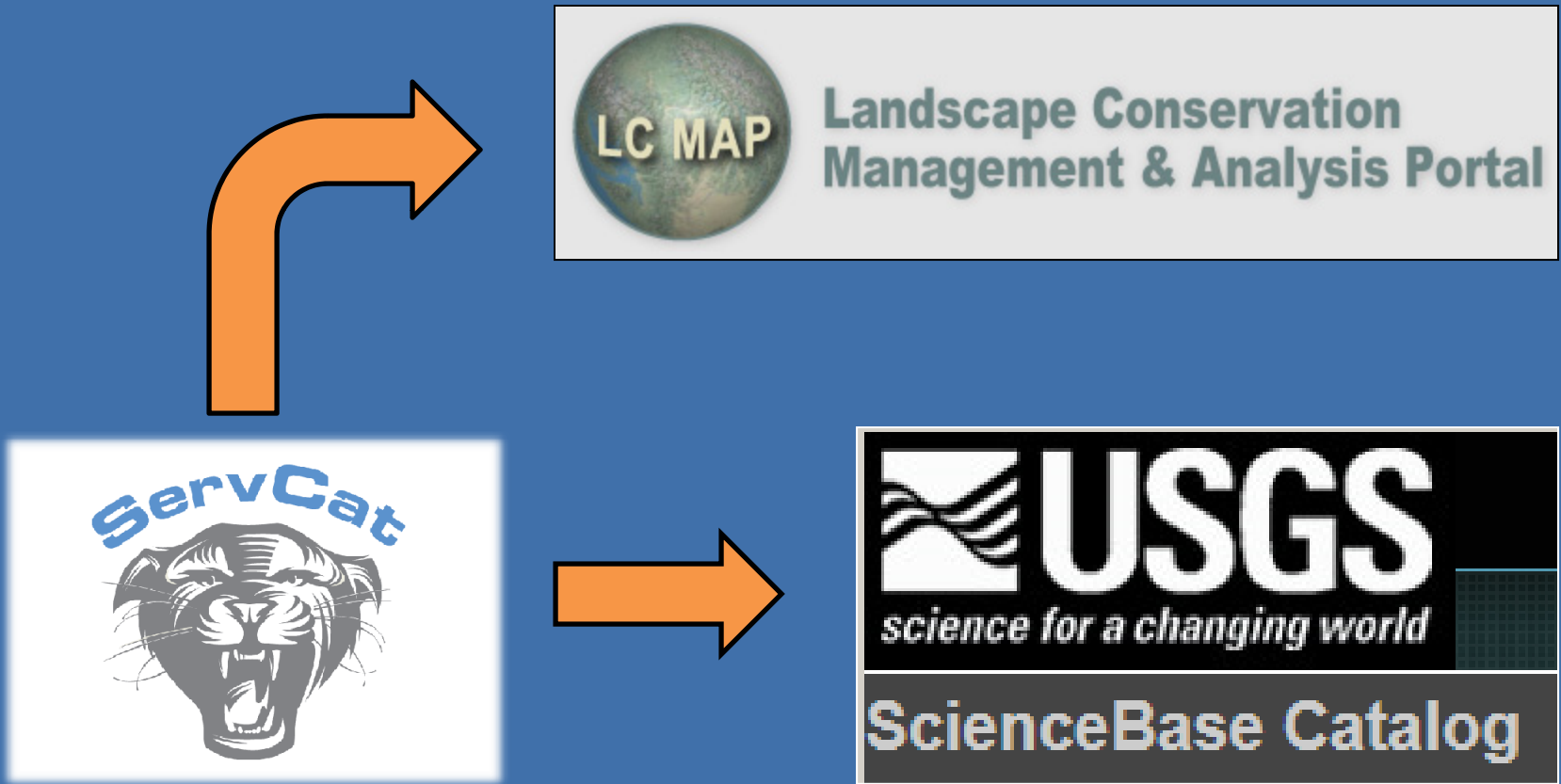


Geospatial Dataset Discoverability





FWS, LCC and USGS Collaboration



Public Records





U.S. Fish & Wildlife Service

Natural Resource Program Center

National Wildlife Refuge System

We can no longer afford to independently
toss conservation actions at the landscape
hoping something is going to stick.

We must be deliberate and we must work
together as a conservation community.

Natural Resource Program
Natural Resource Program Center

